

SECTION	3	COMMISSIONING
	3.1	Introduction
	3.2	Batteries
	3.3	Anti-Tip Units
	3.4	Chassis Covers
	3.5	Footrests
	3.6	Seat Units
	3.7	Controllers
	3.8	Armrests
	3.9	Controller Cable Connections

3 COMMISSIONING

3.1 Introduction

The sequence of commissioning starts with the chassis first and builds logically to the final operation after connecting the controller.

It is important that the sequence is followed for all Vixen wheelchairs.

3.2 Batteries

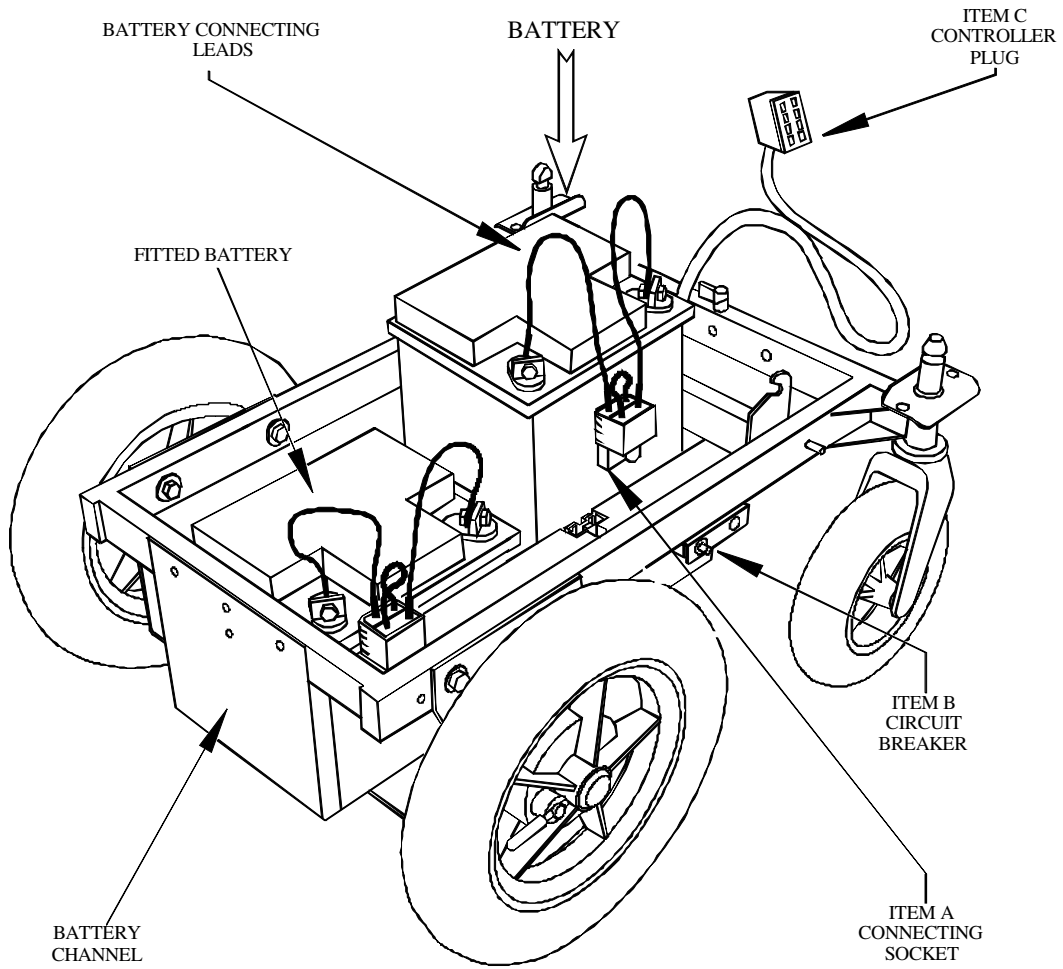
Fit the connecting leads to battery terminals, the red lead to the positive battery terminal and the black lead to the negative battery terminal.

Place the batteries in battery channel with the positive terminals towards the front of the chassis.

Connect the battery leads to the sockets on battery channel.

Important

Regardless of battery size or type the positive terminal of each battery is located nearest the front of the chair.



BATTERY LOCATION

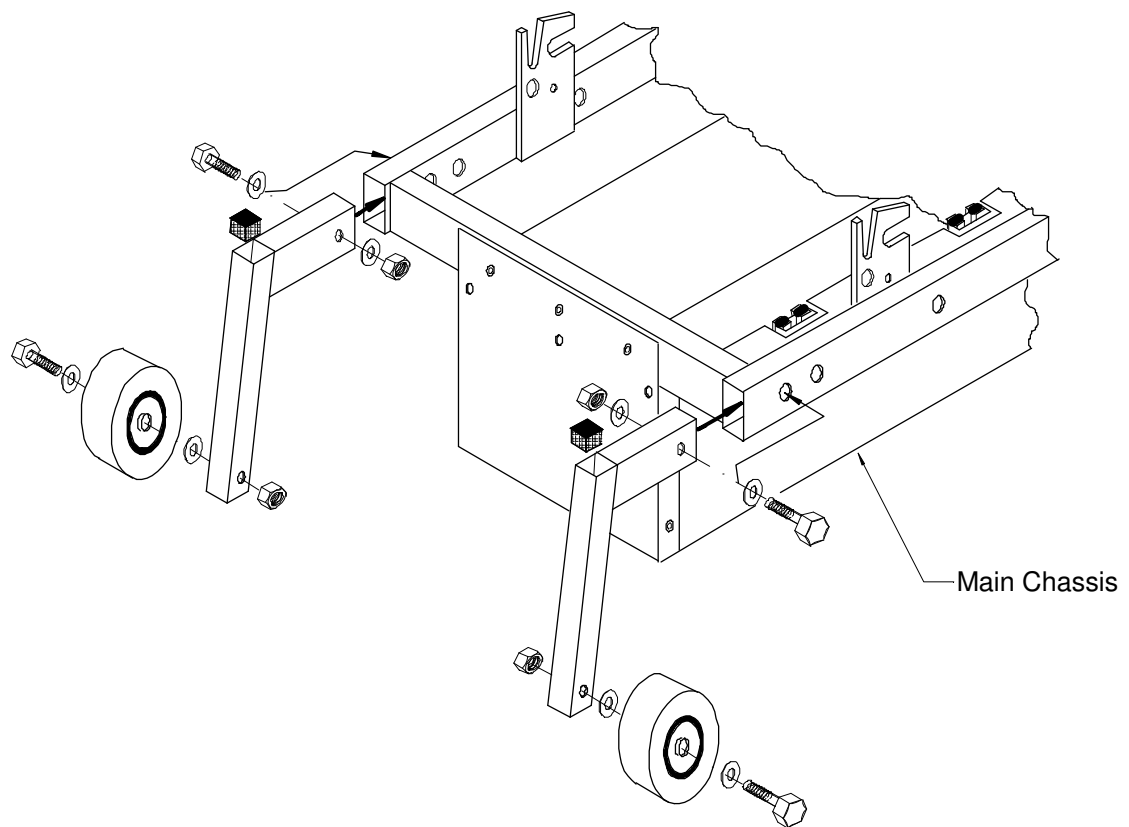
3.3 Anti –Tip Assemblies

Slide the anti-tip assemblies into rear chassis members and secure with the nuts and bolts provided.

The wheels on the anti-tip assemblies where issued must be fitted to the mounting holes provided.

3.4 Chassis Covers

After fitting the batteries and anti-tip assemblies the Chassis Cover can be placed over the battery compartment.



FIXING ANTI TIPS

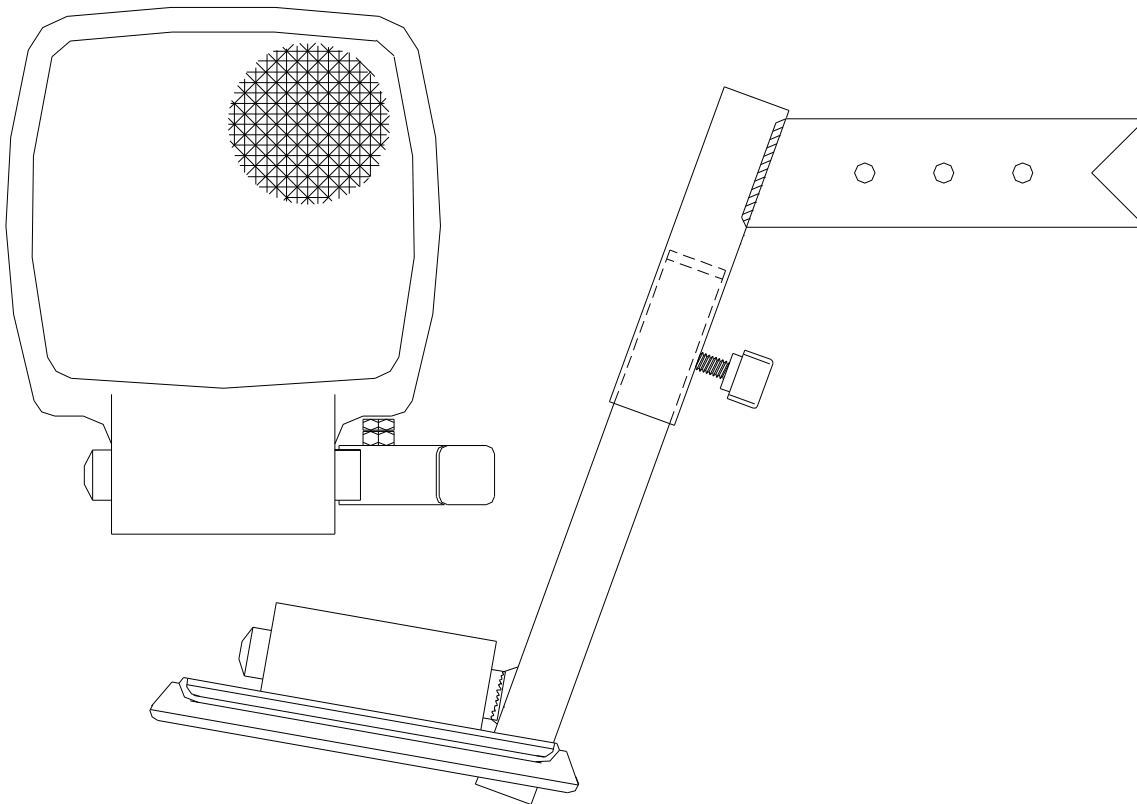
3.5 Footrest Assemblies

There are 2 types of footrest: -

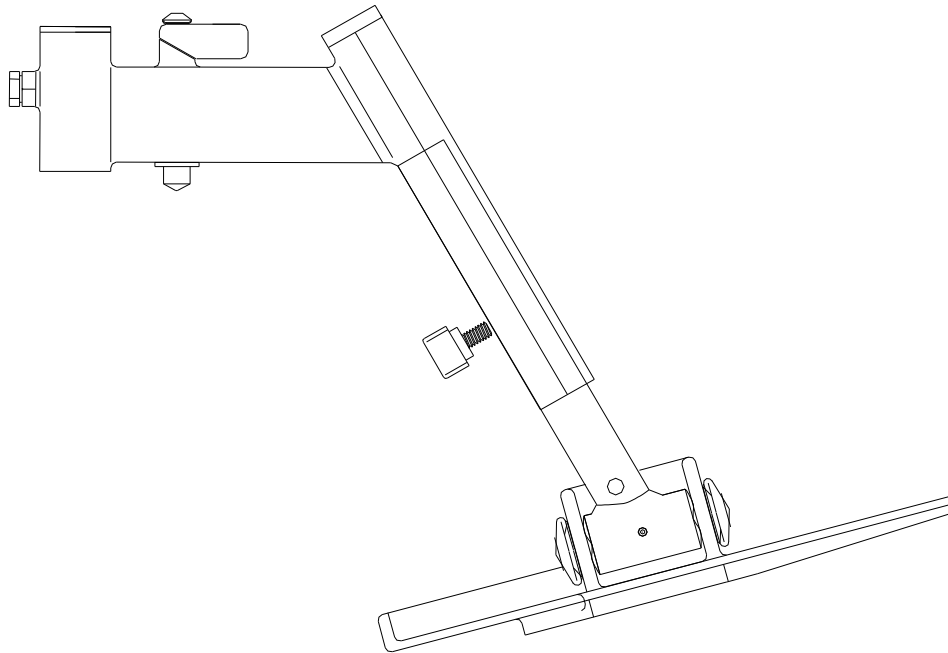
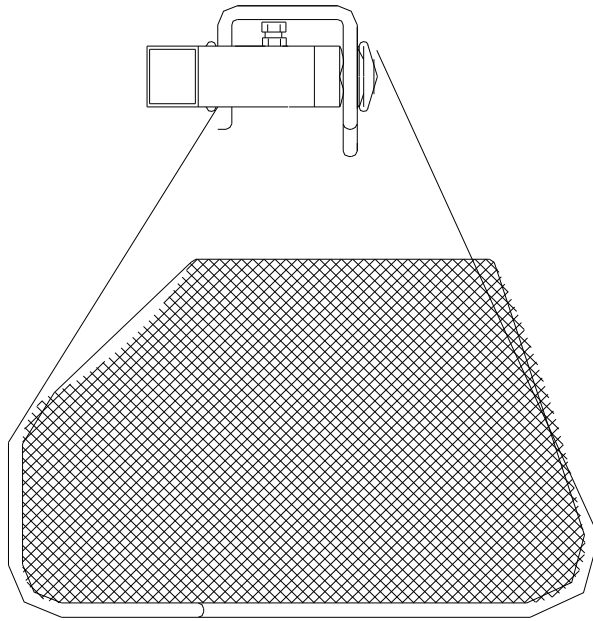
The standard footrest (fitted to the Cub and EPIC)

The heavy duty footrest (fitted to the EPIOC, Heavy Duty)

Both types of footrest have 8 adjustment positions for height..



STANDARD TYPE FOOTREST



HEAVY DUTY TYPE FOOTREST

3.6 Seat Unit

To attach the seat unit to the chassis: -

Locate the front seat bolts into the chassis slots by sliding the seat unit along the chassis cover. Ensure both bolts are located correctly.

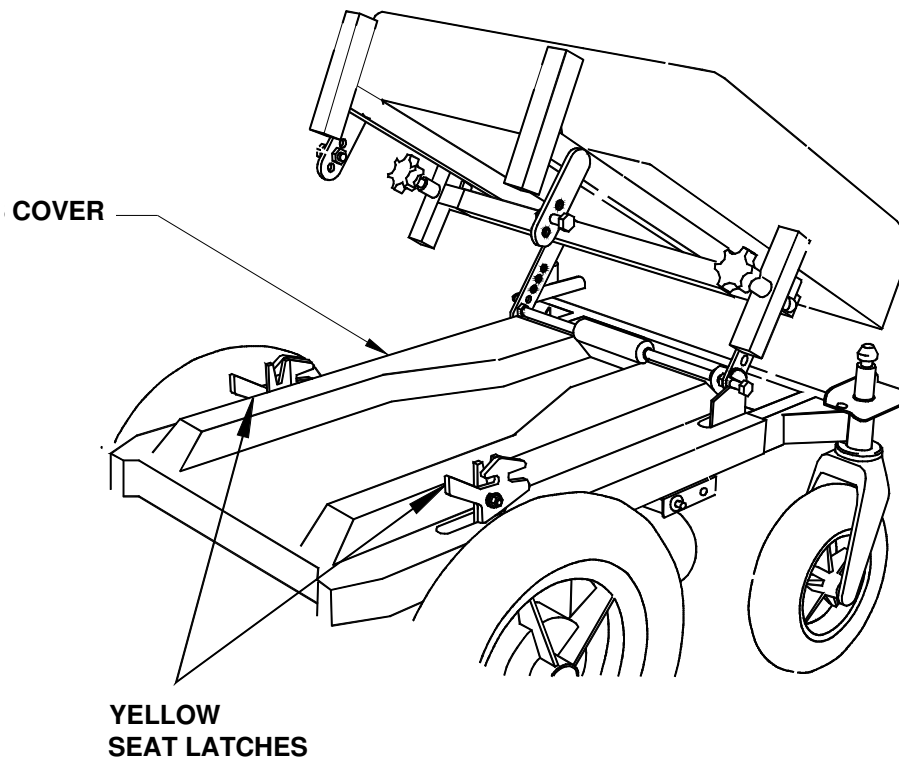
Lower the rear of the seat unit to engage the rear seat bolts into the rear chassis slots/quick release latches.

To remove the seat unit: -

Disconnect the controller.

Depress the seat latches, tilt the seat forward and lift the seat out of the front chassis slots.

When attaching or removing the seat unit it is recommended that the armrests and backrest be removed where removable.



FITTING STANDARD SEAT UNIT

3.7 Controllers

Controller Mounting Bracket

Where applicable the mounting bracket is fitted to the specified armrest when despatched.

To remove the mounting bracket, remove the front arm pad fixing screw, remove the armrest locking screw, which retains the mounting bracket, and slide the mounting bracket off the armrest tube.

When refitting the bracket ensure the arm pad screws are tightened.

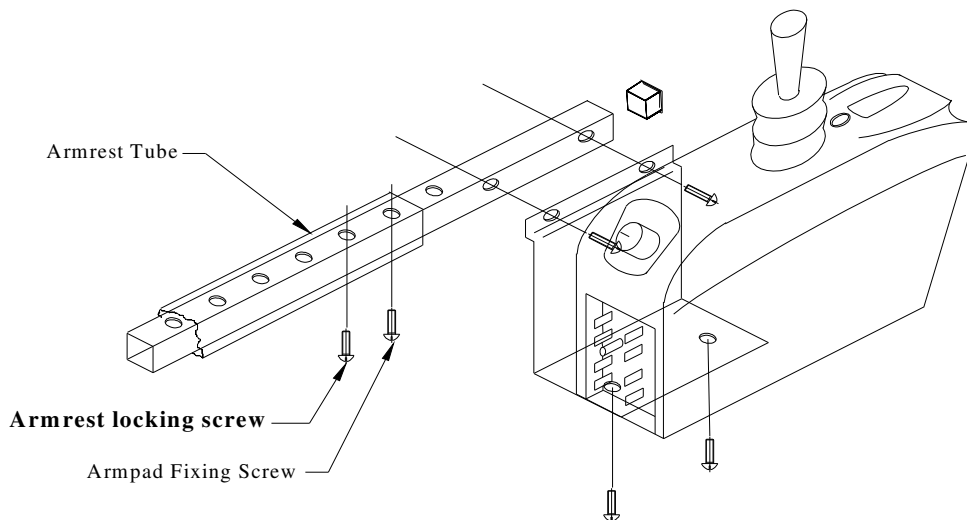
Mounting Brackets are supplied for the PG Drives Technology controllers or the Dynamics Europe controllers, with options for a dual controller or attendant controller according to the customer's order.

Remote Controllers

For all chairs fitted with remote means of control, the chair is supplied with the control box fitted to the front of the chassis.

The Vixen Attendant and Vixen Dual controls are supplied with the attendant controls fitted.

Separate information will be issued with the chair to cover remote control configurations for special design orders.



Integral controller mounting

3.8 Armrests

Armrest Mounts

There are 4 types of armrest mounts: -

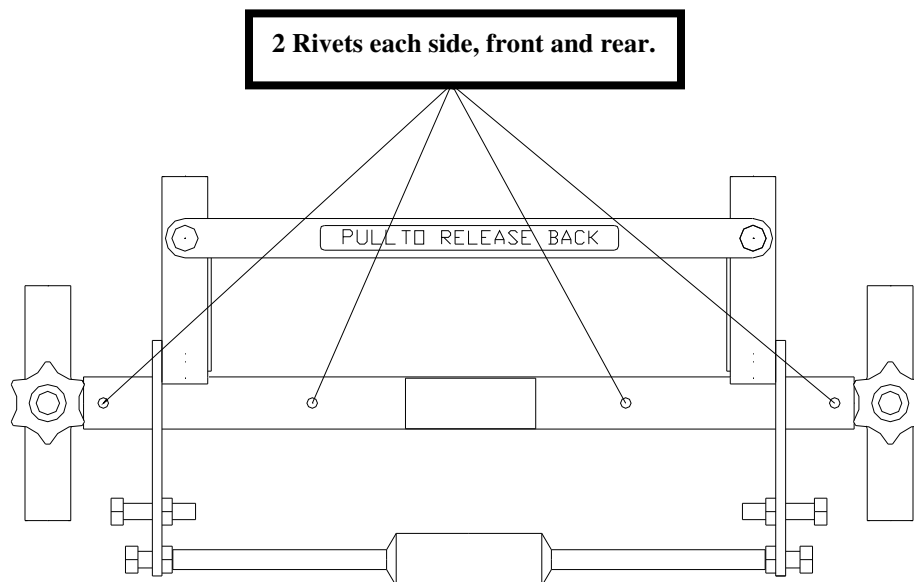
- The Vixen Cub (Latch Lever and clamp)
- The Vixen Epic & Epioc (Latch Lever & clamp)
- The Vixen Heavy Duty (Bigger dimension, Latch Lever & Clamp)
- The Vixen XL (Double vertical support)

The armrest mount is riveted to the seat frame on the Epic, Epioc and Heavy Duty, and bolted on the Cub and XL.

In order to change the seat width, remove the 4 rivets, or bolts, securing the armrest mounts to the seat frame.

Set to new seat width and rivet or bolt into place.

Note. When changing seat width on XL chair, the back cushion must also be changed to suit new width.



STANDARD SEAT FRAME REAR VIEW

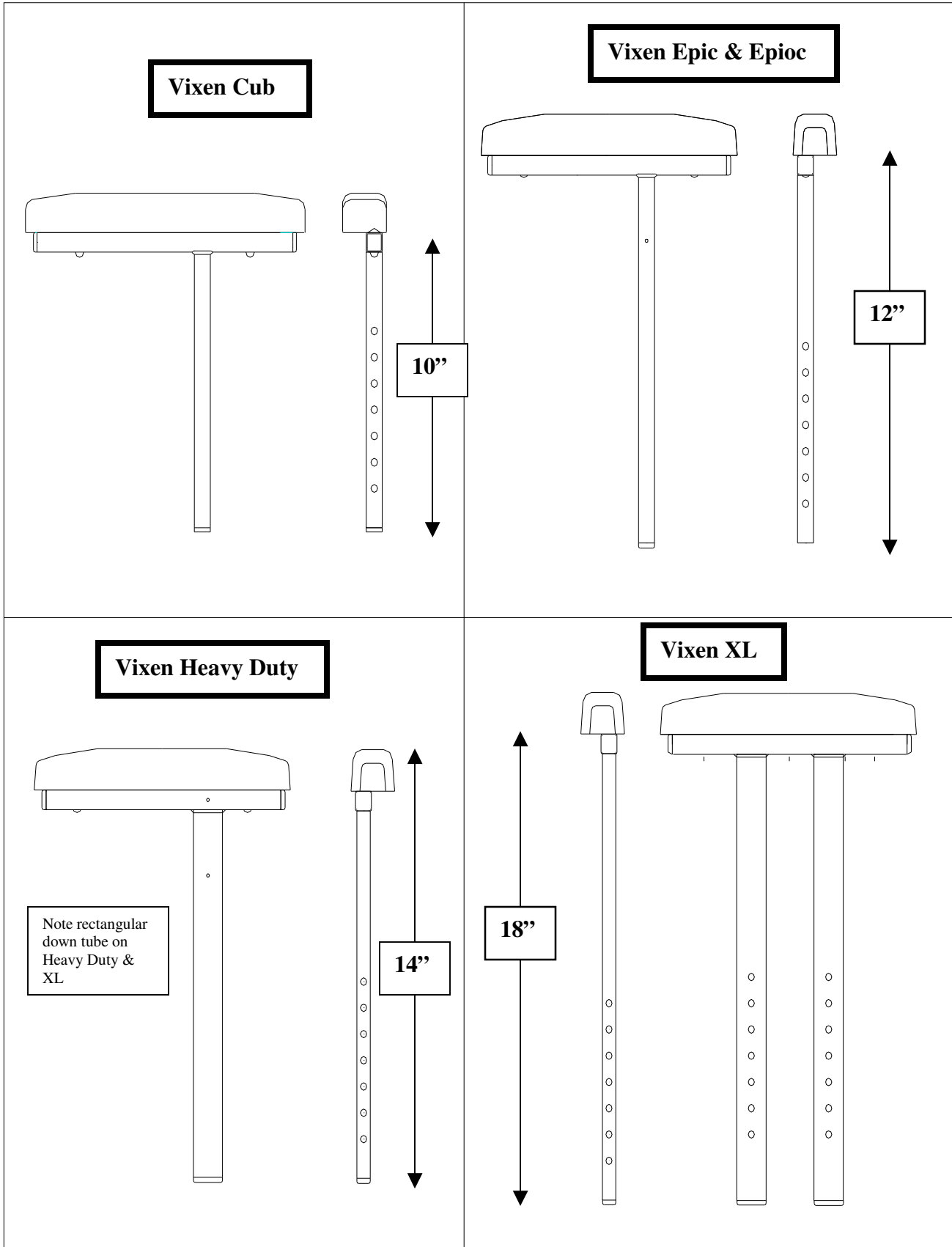
Armrest & Pads

There are 4 types of armrest: -

- The Vixen Cub
- The Vixen Epic & Epioc
- The Vixen Heavy Duty
- The Vixen XL

Each armrest can be adjusted individually for height by loosening the clamp handle, where applicable, and operating the latch lever. Ensure the latch lever is fully engaged and tighten the clamp handle before using the chair. The armrest can also be reversed for a shorten reach, however this option is not available on the XL armrests.

On all seat units the arm pads are off set outwards, however the arm pad can be off set inwards to lessen the width of the seat.



ARMREST TYPES

3.10 Controller Cable Connections

Ensure that there are no external loops of cable that could catch on obstructions when the chair is in motion.

Route the cable from the fixing point at the front of the chassis, under the seat unit and connect the controller.

Separate information will be issued with the chair regarding connection from the control box to the attendant control/dual unit.